

Important information about your recycling service

You can now order a new bin to replace your black recycling boxes.

The new bin – which is optional – will make it easier for you to recycle your plastic, cans and glass. **But it is not for paper and cardboard, please continue to use your blue sack for these materials.**

The bin which will have a purple lid is being introduced following requests from residents and will help us all to recycle more.



How to order your new bin

Visit www.shropshire.gov.uk/waste

Please only call us if you cannot access the online request form as we anticipate that our phone lines will be very busy.

The number to call is **0345 678 9007**.

When will I get my new bin?

Deliveries will start from **Spring** and will gradually be rolled out across the county over a number of months.

What do I do with my black boxes?

Please keep them – Veolia's collection crews will collect the mixed recycling from both boxes and bins.

Use them for other purposes - for example for storage or planters for the garden. Be imaginative with them!

If you don't want to hang onto your black boxes, please return them to your nearest Household Recycling Centre to be recycled.

Thanks for recycling



To find out more information about recycling please visit:

www.shropshire.gov.uk/waste

customerfirst@shropshire.gov.uk [0345 678 9007](tel:03456789007)

follow Shropshire Recycles on [@shroprecycles](https://twitter.com/shroprecycles) [@shropshirerecycles](https://www.facebook.com/shropshirerecycles) [@shroprecycles](https://www.instagram.com/shroprecycles)

Working in partnership



**PROUD TO MAKE
A DIFFERENCE**



What can go in your purple lidded bin

✓ Yes please

Please put items directly into the container, **do not** use carrier bags.

- ✓ Aerosols 
- ✓ Cans and tins 
- ✓ Bottles and jars 
- ✓ Bleach, cleaning, shampoo and shower gel 
- ✓ Milk, drinks bottles and plastic bottles 
- ✓ Tubs and trays 
- ✓ Pots 
- ✓ Foil 

More information on your recycling service please visit:
www.shropshire.gov.uk/recycling-and-rubbish

✗ No thanks

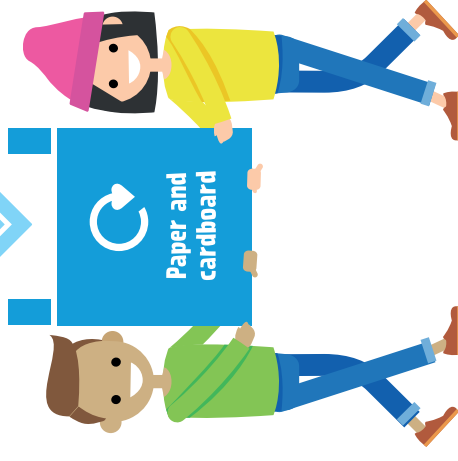
Please **do not** put these items into your purple top bin.

- ✗ General waste (nappies, black bags) 
- ✗ Carrier bags 
- ✗ Plant pots & trays 
- ✗ Food waste 
- ✗ Plastic film 
- ✗ Crisp packets 
- ✗ Take away containers 
- ✗ Black plastic, e.g. food trays 

REMEMBER
 Paper and card can be recycled by using your blue bag, please don't put it in your new recycling bin



Cardboard and paper



Working in partnership



Shropshire
recycles

PROUD TO MAKE
A DIFFERENCE